

Lessons learned from South Pacific Passive House certifications

How not to kill a Passive House project



Clare Parry & Jason Quinn





Hard-Fought Lessons Learned



SIMPLE BUT NOT
EASY



Airtightness LAYER



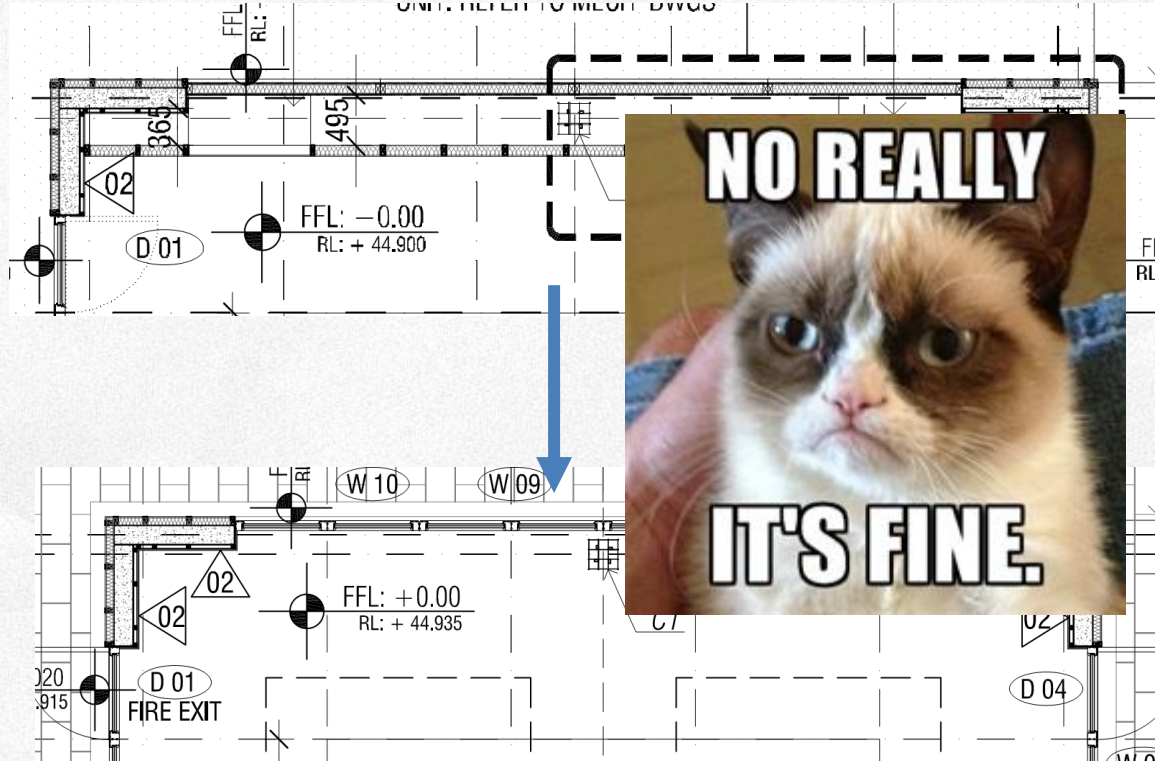


Everybody
wants the
fireplace



Images: International Polar Foundation

Clients &
Architects like to
make
“inconsequential
” changes





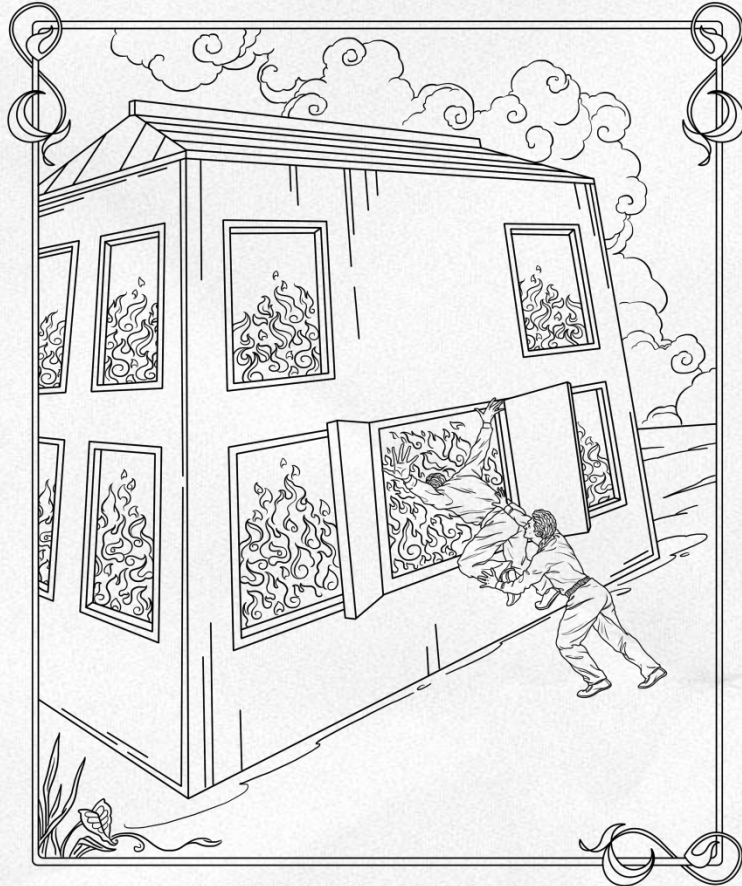
Know Your Audience 101





Minimum legal compliance is not a selling point

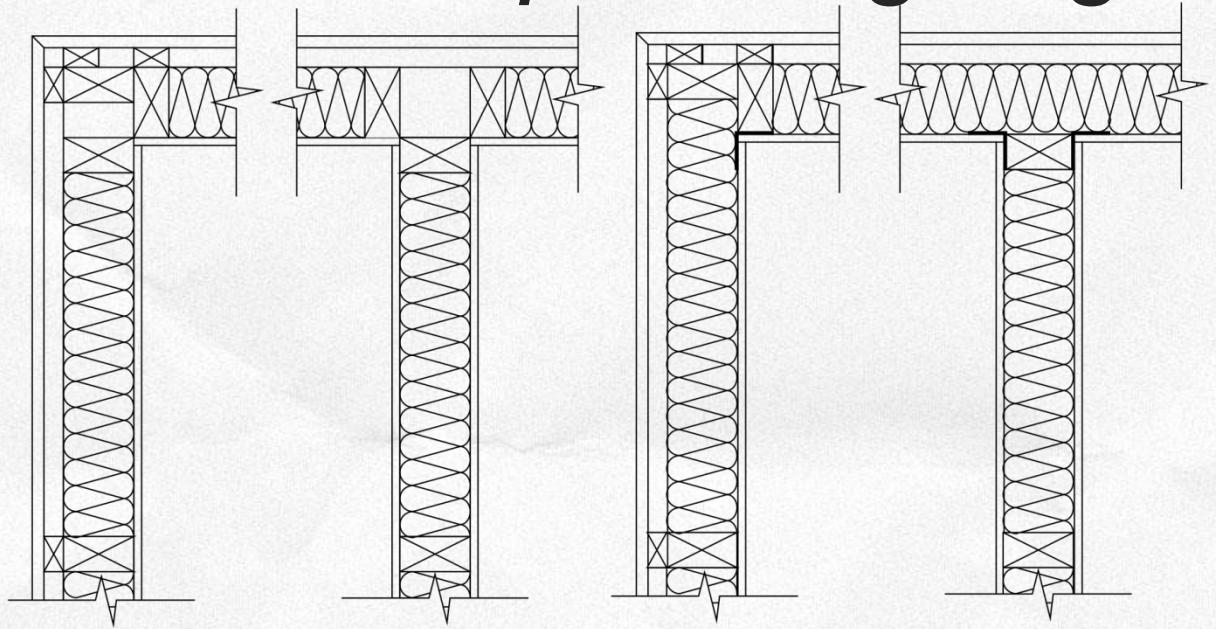




**Don't cook
your clients!**

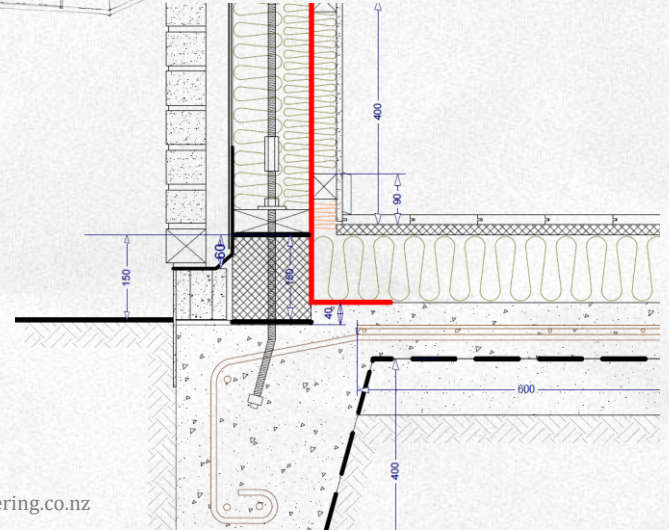
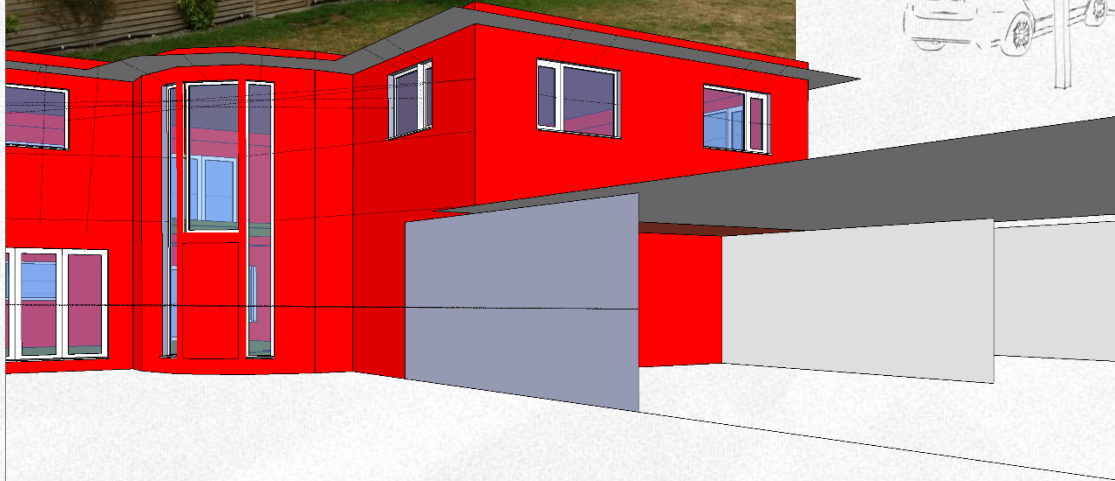


Fundamentals matter let's do *simple* things right





Where is the thermal envelope?





Not too hard or soft but just right





Trust ... but verify!





Clare Parry is Director and Principal Consultant at Grün Consulting, and Chair of the Australian Passive House Association. She has had a life-long interest in sustainability and design, using holistic approaches to achieve sustainable measures and provide a better outcome in the longer term, both for the building user & the environment. Her focus is on building performance, and she works extensively with the Passive House standard as a Designer and Certifier.



Jason Quinn is an ex-NASA International Professional engineer now working as a Passive House Designer/Certifier and building scientist. He is happiest solving tough technical problems and focuses on the intersection of physics and the design of buildings. He has outspoken views on New Zealand housing and is deeply concerned about fuel poverty and poorly designed buildings impacts on the health of individuals and society.

